



# COVID Tracking in the Understanding America Study

*Arie Kapteyn*

*We gratefully acknowledge financial support from the Bill & Melinda Gates Foundation, the National Science Foundation, and the National Institute on Aging (3U01AG054580-04S3)*

# Understanding America Study

- Since 2014, longitudinal, national probability-based internet panel of currently about 12,500 US residents (growing to 20,000+), collecting information at multiple time points each year on economic, labor, attitudinal, and health measures, etc.
- Tracking pandemic effects started March 10, 2020

Every day ~450 respondents answered our questions



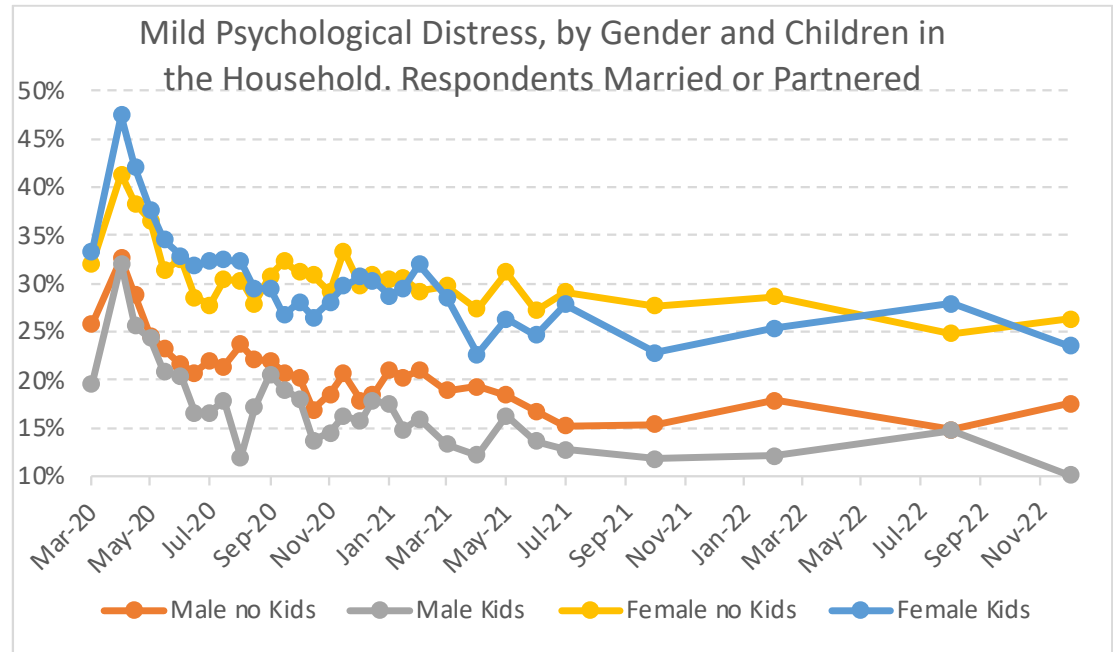
6,000-6,500 over two  
weeks (Frequency  
halved since  
February 2021  
summer 2021)

# Every day ~450 respondents answered our questions



6,000-6,500 over two weeks (Frequency halved since February 2021 summer 2021)

Almost three thousand new graphs every day  
<https://covid19pulse.usc.edu/>

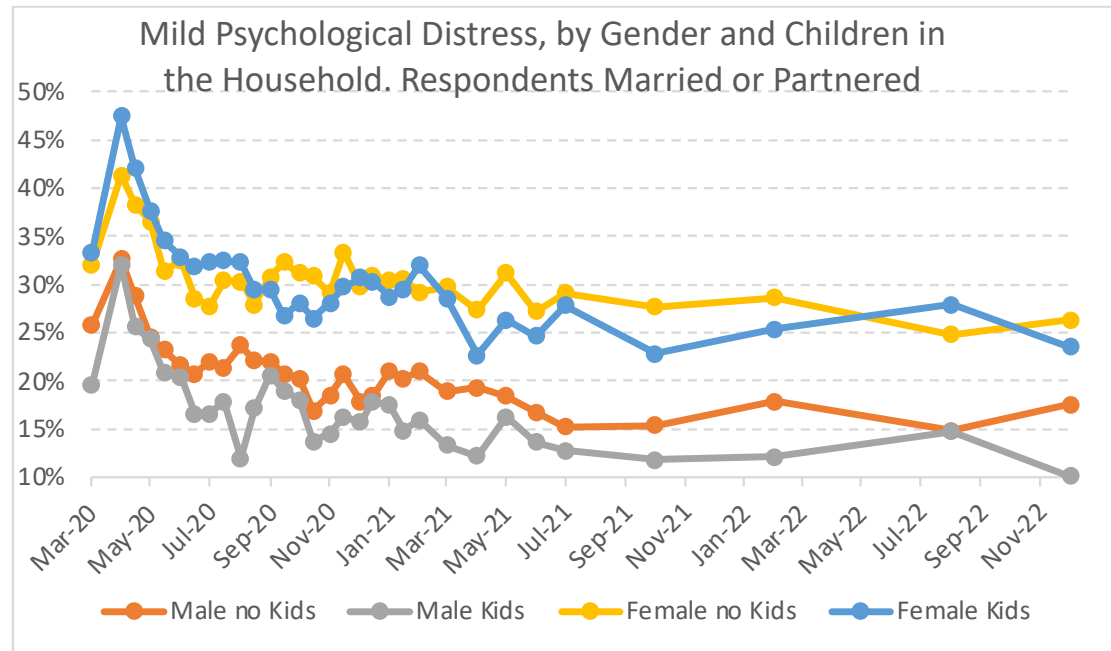


# Every day ~450 respondents answered our questions



6,000-6,500 over two weeks (Frequency halved since February 2021 summer 2021)

Almost three thousand new graphs every day  
<https://covid19pulse.usc.edu/>



High frequency tracking ended at the end of June 2021; since then one survey every four months (so far until November/December 2022)

# Data Widely Available in Real Time

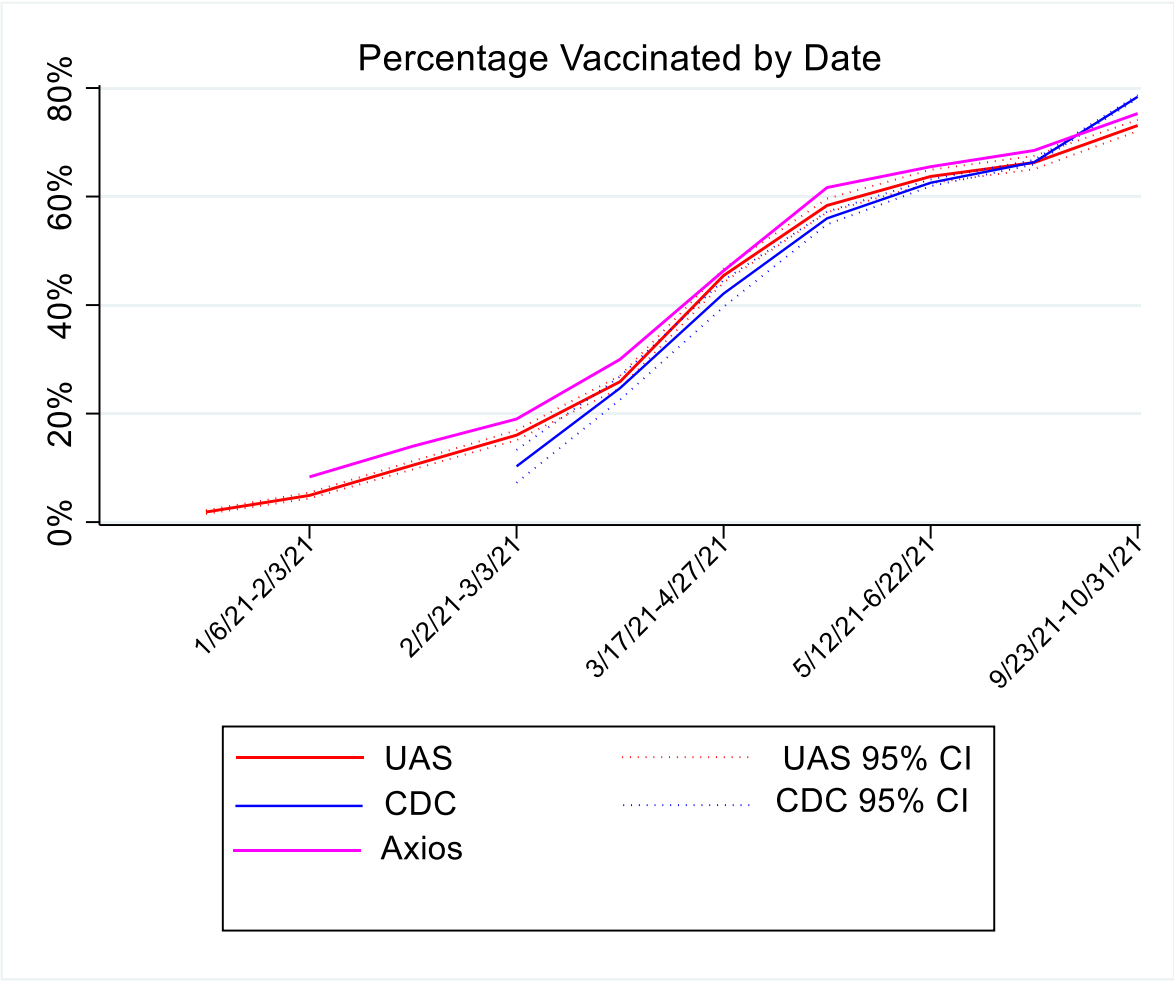


- Full wave data files released for public use every two weeks, including a harmonized longitudinal file and codebooks:  
<https://uasdata.usc.edu/page/Covid-19+Home>
  - Thirty-three waves of national data and fifty-seven waves of LA County data available.
    - 208,858 completed surveys from 10,716 different respondents
  - Well over 500 research groups worldwide, comprising some 1,000 researchers are using UAS COVID19-related data
    - About 150 peer reviewed publications that we know of, so far.
  - We have added contextual data that can be downloaded with the longitudinal data



# Accuracy of Population Estimates

# Comparing CDC, Knowledge Panel (Axios/Ipsos) and UAS



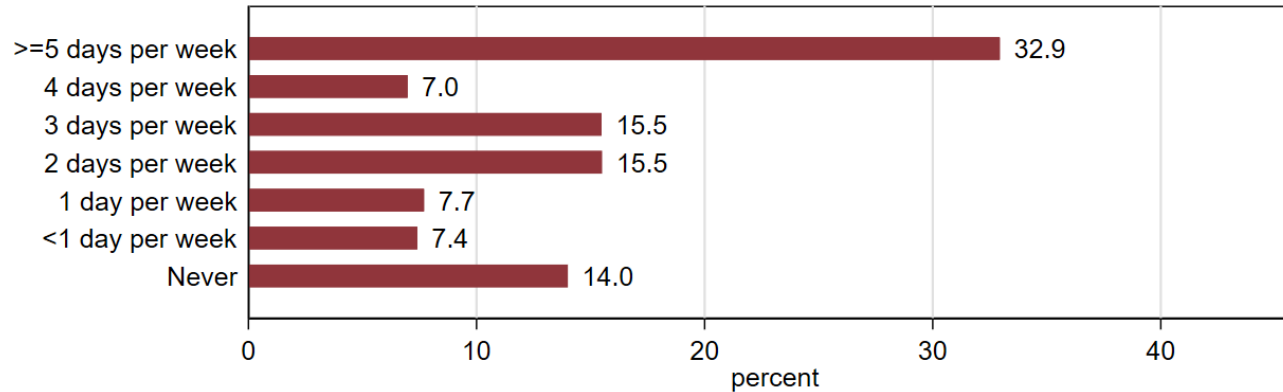


# Preferences for Working from Home

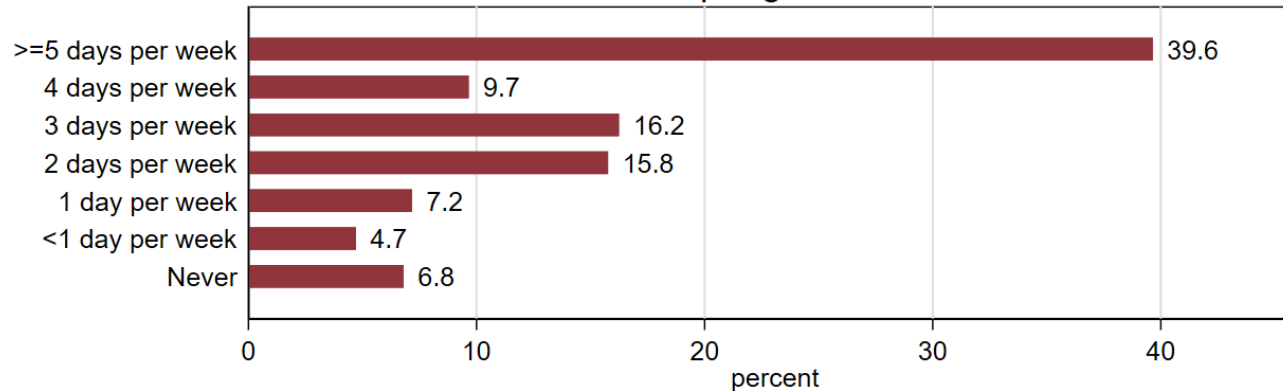


(among those with jobs where that is technically possible)

Summer 2021



Spring 2022



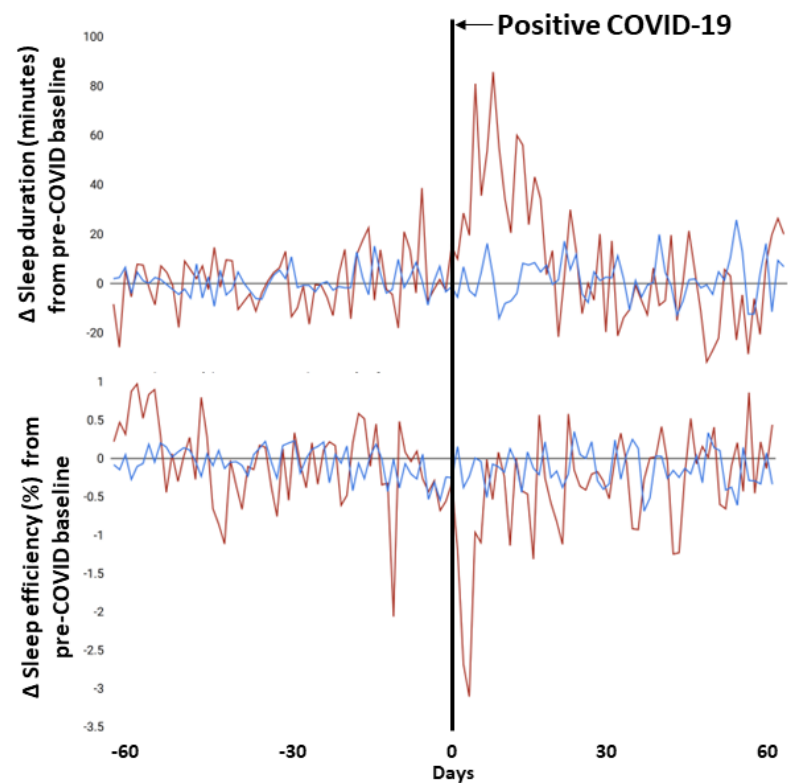
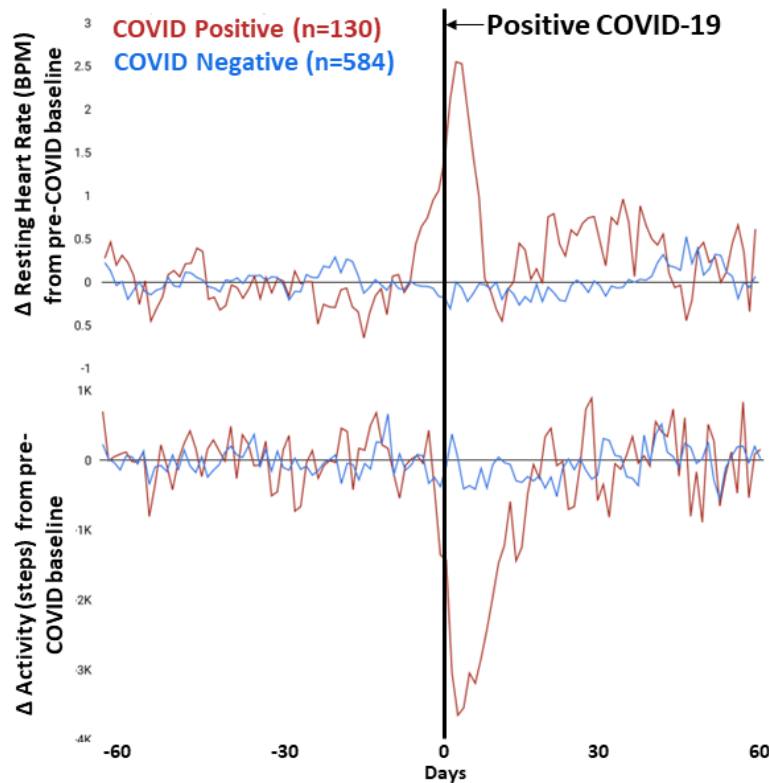
# Accuracy of Self-Reported Infections



USC Schaeffer



Changes in biometrics from individual-specific baselines during COVID infection

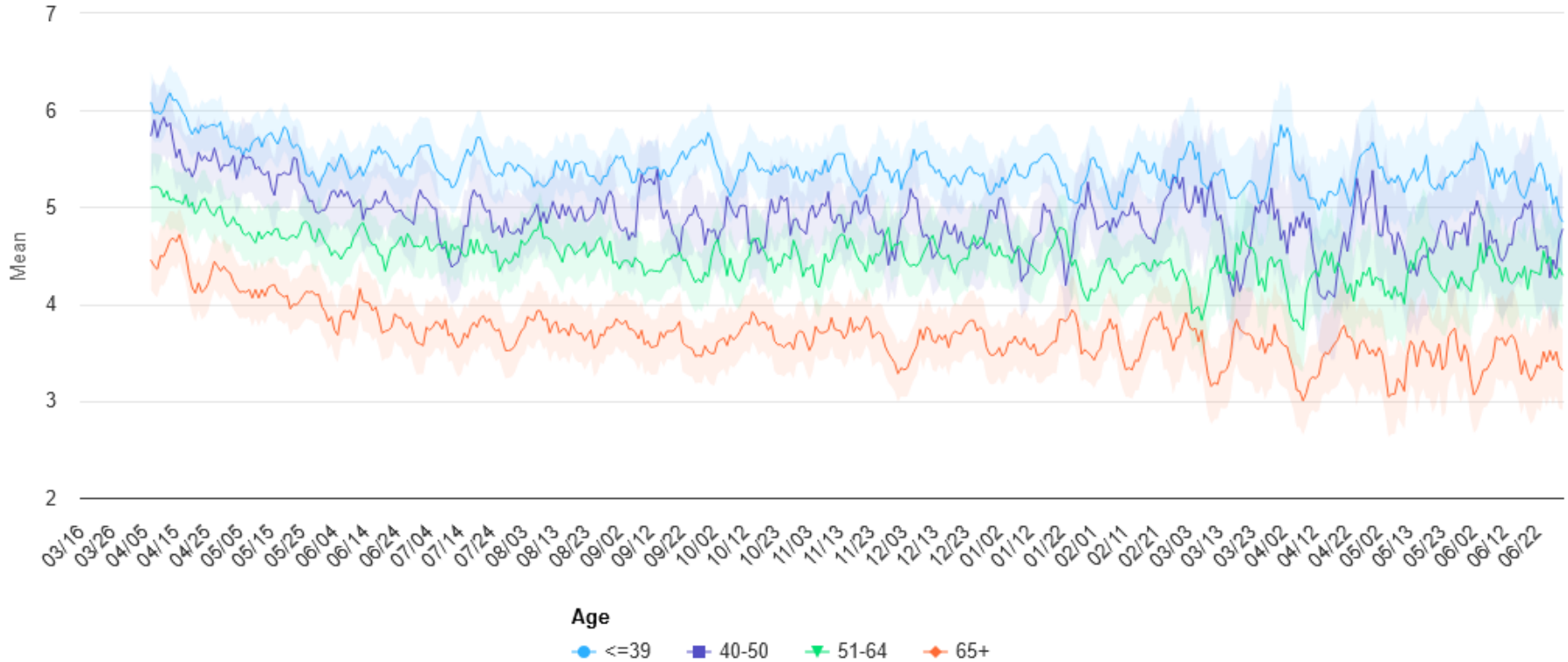


# Stress and Age



## Average perceived stress

National sample; 7-day window

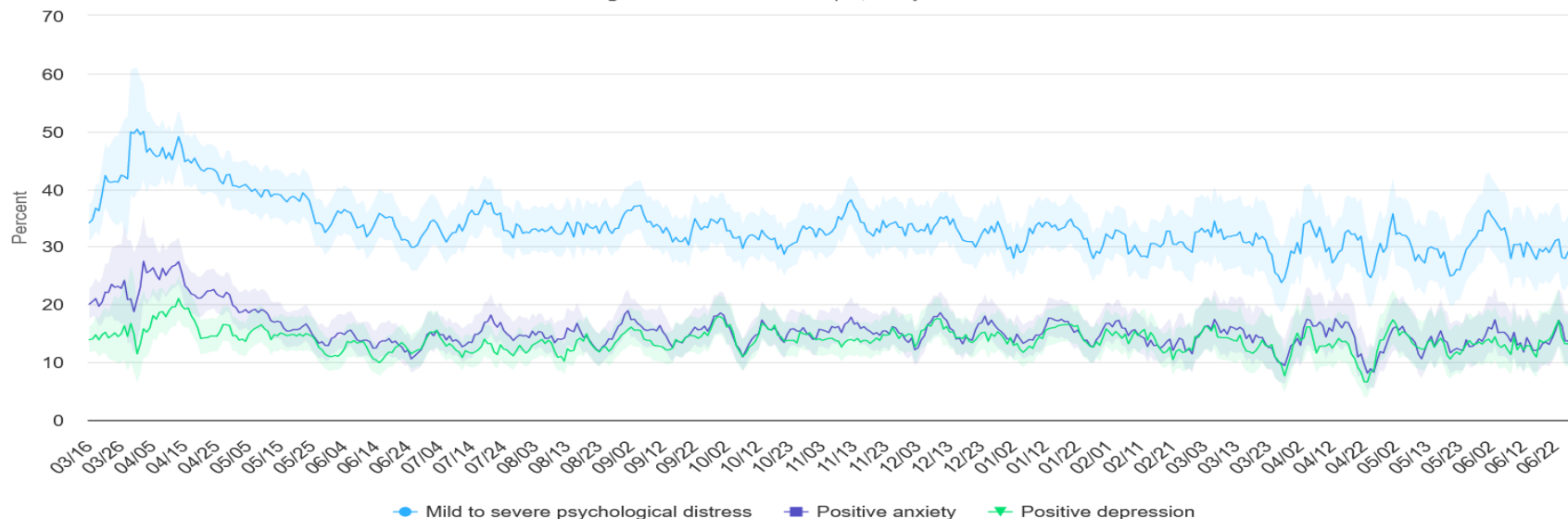


# Depression and Anxiety by Age



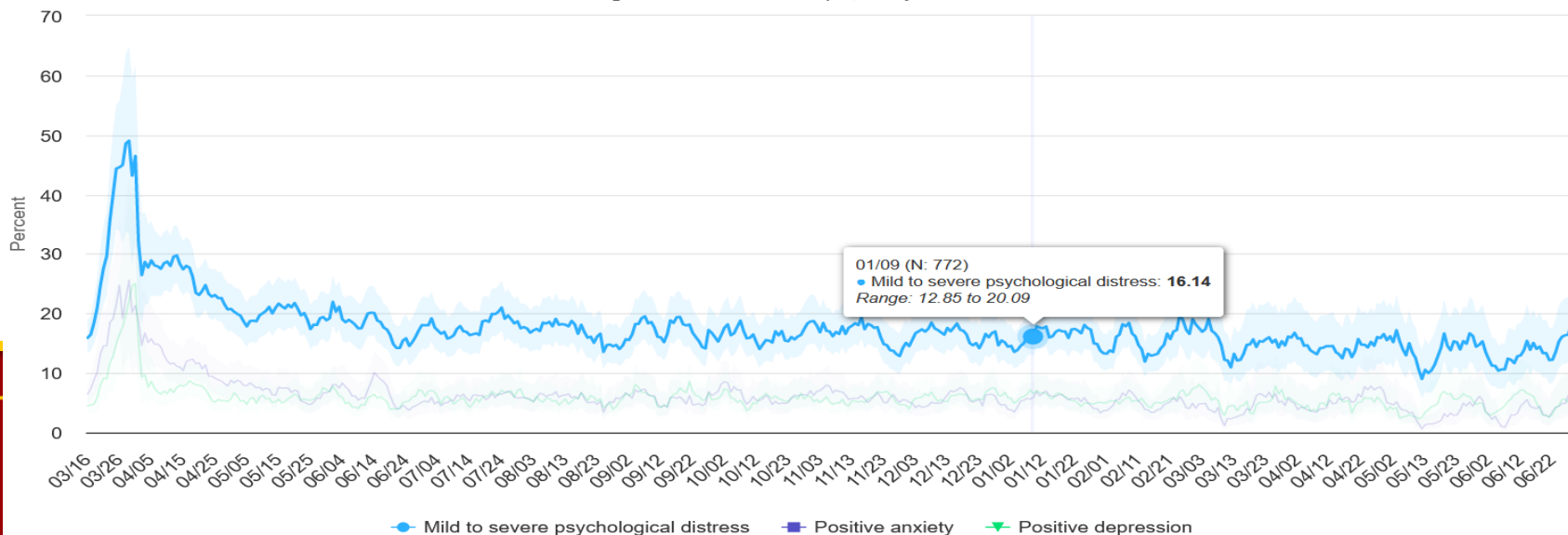
## Depression and anxiety (PHQ-4)

Age = <=39 - National sample; 7-day window

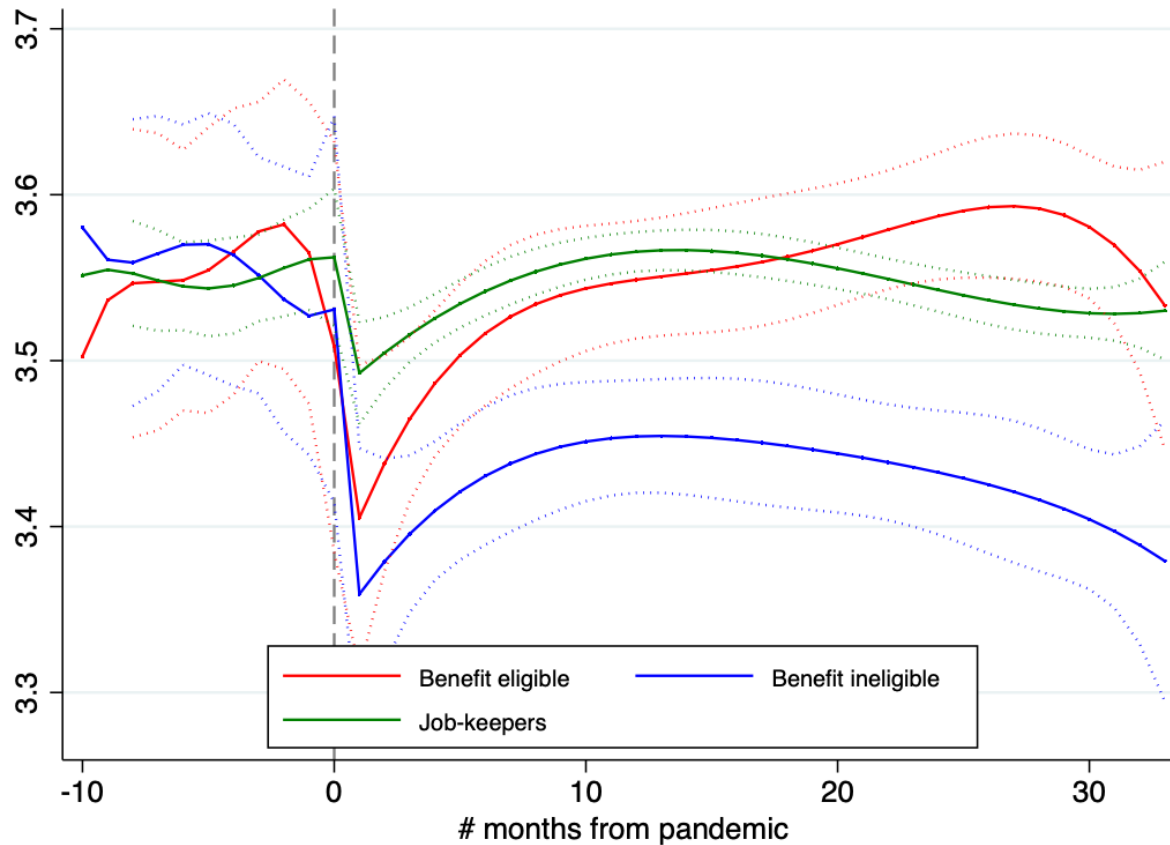


## Depression and anxiety (PHQ-4)

Age = 65+ - National sample; 7-day window



# Extended Benefits for Job Losers made all the difference (50+, 4<sup>th</sup> Degree Polynomials)



# Miscellaneous Results



- Trump voters less likely
  - to get vaccinated
  - to exhibit protective behavior
- Trump voters estimate lower risks of infection and death
- Striking correspondence between self-reported long covid and associated symptoms



**Thank you!**