

A look ahead

Professor Paola Zaninotto

Aim of ELSA

To provide a nationally representative population research platform for studying the dynamic relationships between

- Socioeconomic position
- Mental and physical health
- Cognitive function, Alzheimer's disease and other dementias
- Economic and social circumstances
- Well-being

as people move from work to retirement and into older age.

Sample

Wave 12 (2025/26) and Wave 13 (2027/28)



Interview approximately 11,000 respondents



Refreshment samples of younger people



Enhancing ethnic minority representation

Mode of data collection



Introduce web-first survey methods backed by face-to-face and telephone assessments.



Self completion questionnaire: online and paper



Health visit for the collection of biomedical, genetic and physical performance data



Between main-wave sequential web-CATI surveys

New modules



Climate change attitudes and behaviors



Questionnaire content relevant to the lives of ethnic minority people

migration histories, national, religious and ethnic identity, experiences of discrimination across the life course

Repeating modules

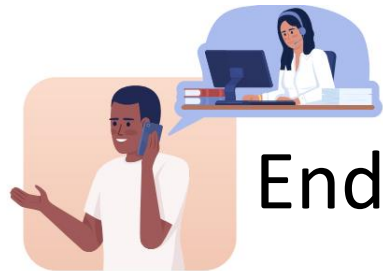


Accelerometers for objective sleep and physical activity

Objective Hearing tests



Online nutrition assessment



End of life interviews


Life history



Focus on Dementia: HCAP3

 2028 provide a 10-year interval from HCAP1 and 5-year interval from HCAP2

 Sample: HCAP1, HCAP2 and new people 65+ predominantly from ethnic minority groups

 Content of the interviews will be largely the same as in previous HCAPs to facilitate comparisons.

Linkages



Thank you for celebrating the 20th
anniversary of ELSA with us

